

BELLA CUCINA

Kitchen and Bath



See how quick and easy it is
to measure your kitchen.

Measuring Guide

IT'S EASY

Our Measure guide is easy to use and helps collect the basic information to help you and your designer start your design. This not have to be a work of art but just a clear and accurate drawing of your space.

1

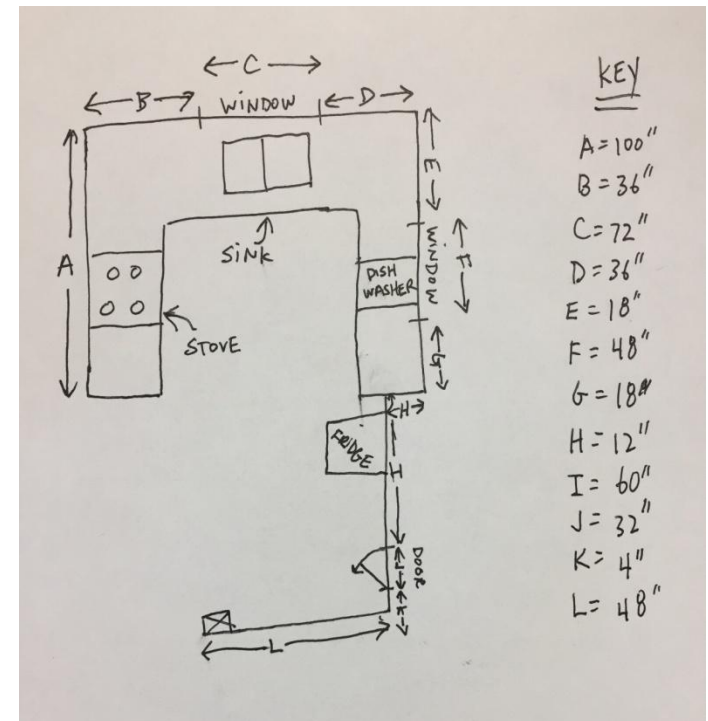
Step 1: Your Kitchen Shape

Draw your kitchen as a box showing all the walls that you think will have cabinets. Be sure to include any major structural features or obstacles.

2

Step 2: Draw It Out

Mark any openings such as windows and doorways. Be sure to include radiators or other obstacles that affect where cabinets can be installed. Now, label all the openings in your kitchen. In this sketch we'll use areas A thru I. Record these letters as a key on your sketch.



IT'S EASY

3 Step 3: Measure

Now it's time to get out the tape measure. Measure all the openings, from outside edge to outside edge, and fill in the key. If you're uncomfortable with precise measurements feel free to round to the nearest inch. Remember this is just to get started, your designer will confirm details later.

4 Step 4: Your Layout

Most people already have a good idea of where the major items will go in their kitchen. Feel free to draw your ideas of what you would like and include the placement of your sink and appliances.

5 Pictures of Your Kitchen

What can really help your designer is to take 'before' pictures of your kitchen and send them along with your measurements.

That's it! You're done! It is that easy to measure your kitchen.

*Drawing does not have to be perfect or to scale – just neat.

